

FORMER RITE AID AVAILABLE!

15596 W HIGH STREET, MIDDLEFIELD, OHIO 44062



FOR LEASE
11,340 SF | 1.79 AC

Kevin Moss
First Vice President
216 363 6453
kevin.moss@cbre.com

Connor Ambrose
Associate
216 535 4730
connor.ambrose@cbre.com

CBRE

THE OPPORTUNITY

- Freestanding 11,340 SF former Rite Aid Available For Lease on 1.79 AC
- Nearby retailers include Giant Eagle, Walmart, Aldi, Tractor Supply, GetGo Gas Station, Subway, Burger King, Harbor Freight Company, Sherwin Williams, Dairy Queen, McDonald's, Circle K, Taco Bell, Ace Hardware, Verizon Wireless, O'Reilly Auto Parts, and Harrington Square Shopping Mall
- The property has 257' of frontage along W High St and 298' of frontage along Springdale Ave
- Zoning: GC - General Commercial
- Average household incomes of \$93,414 within a 5-mile radius
- Traffic counts of 8,714 VPD (Source: ODOT TIMS) along W High St along N Chestnut St



QUICK STATS – 5 MILE RADIUS



DAYTIME
POPULATION
17,788



POPULATION
16,319



HOUSEHOLDS
5,296

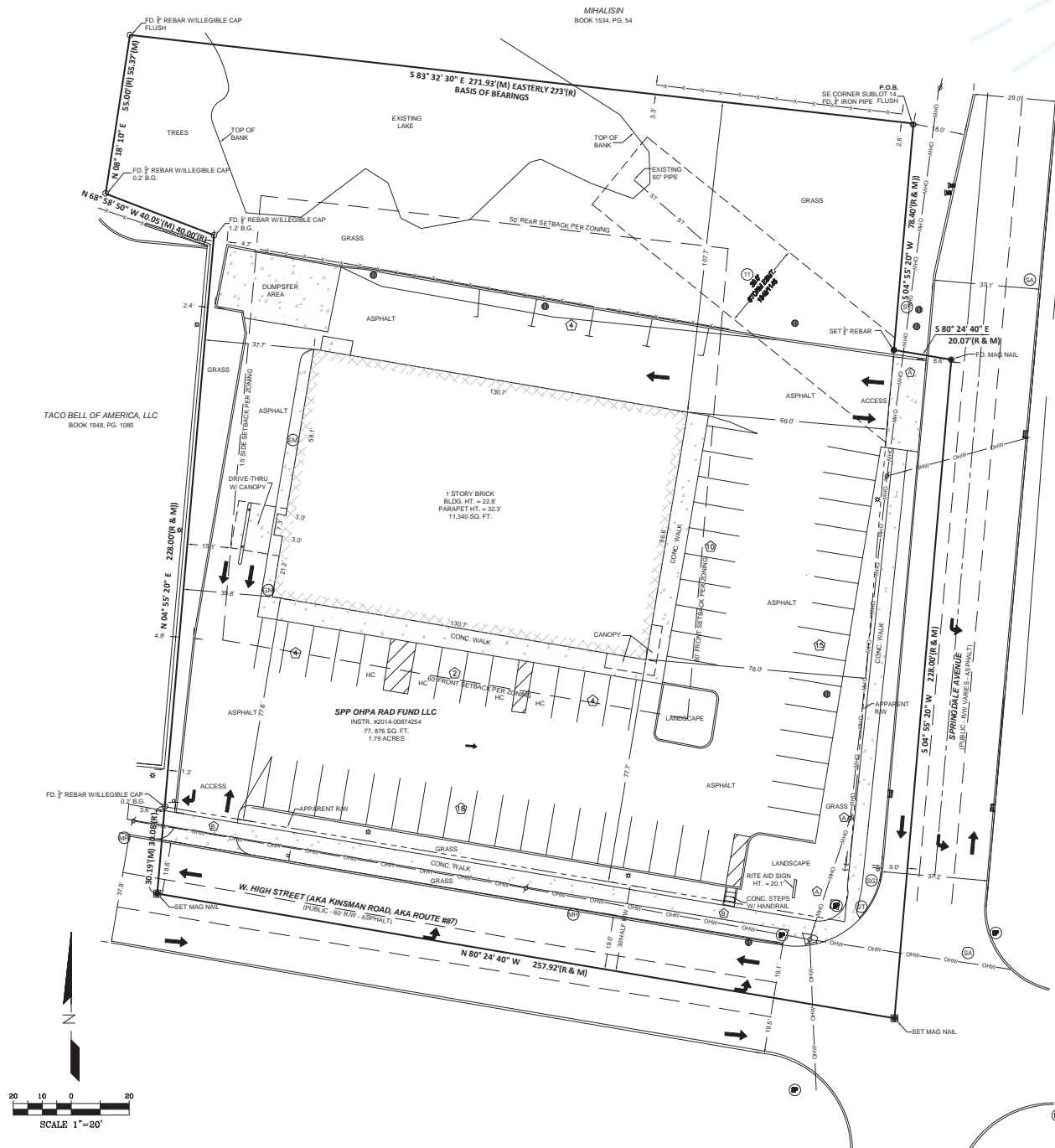


POPULATION
25 & OVER
10,181

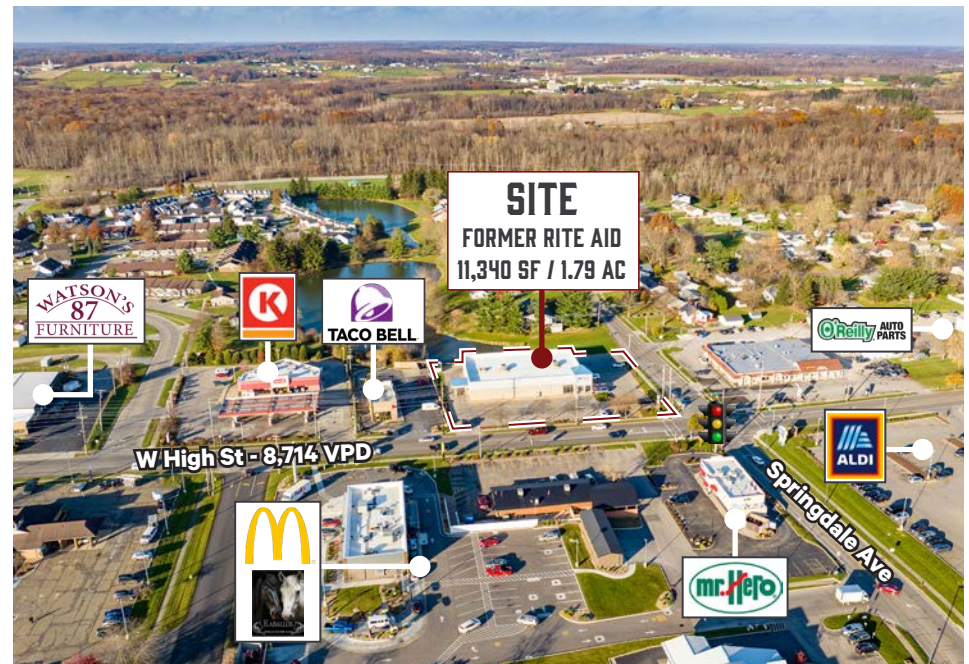


AVG. HOUSEHOLD
INCOME
\$93,414

SURVEY



AERIAL VIEW



MIDDLEFIELD RETAIL TRADE AREA

TRADE AREA INFO
S Main St & W Exchange St
(3 Miles)

- Population: 7,539
- Daytime Population: 11,470
- Median HH Income: \$51,596
- Total Businesses: 505
- Total Employees: 9,212

MAJOR EMPLOYERS

- Great Lakes Cheese - 500
- KraftMaid - 250
- Ohman Family Living - 1049
- Universal Plastics - 75
- Johnsonite - 60



DEMOGRAPHICS

	1 MILE	3 MILES	5 MILES
2023 Population - Current Year Estimate	2,105	7,550	16,319
2028 Population - Five Year Projection	2,059	7,501	16,249
2023 Daytime Population	2,719	11,402	17,788
2023 Households - Current Year Estimate	944	2,755	5,296
2023 Average Household Income	\$77,478	\$81,970	\$93,414
2028 Average Household Income Projection	\$90,302	\$96,295	\$109,100
2023 Median Household Income	\$57,255	\$60,837	\$68,248
2023 Population Over 25	1,413	4,962	10,181

CONTACT US

Kevin Moss

First Vice President

216 363 6453

kevin.moss@cbre.com

Connor Ambrose

Associate

216 535 4730

connor.ambrose@cbre.com

© 2024 CBRE, Inc. All rights reserved. This information has been obtained from sources believed reliable, but has not been verified for accuracy or completeness. You should conduct a careful, independent investigation of the property and verify all information. Any reliance on this information is solely at your own risk. CBRE and the CBRE logo are service marks of CBRE, Inc. All other marks displayed on this document are the property of their respective owners, and the use of such logos does not imply any affiliation with or endorsement of CBRE. Photos herein are the property of their respective owners. Use of these images without the express written consent of the owner is prohibited. Licensed Real Estate Broker.

CBRE